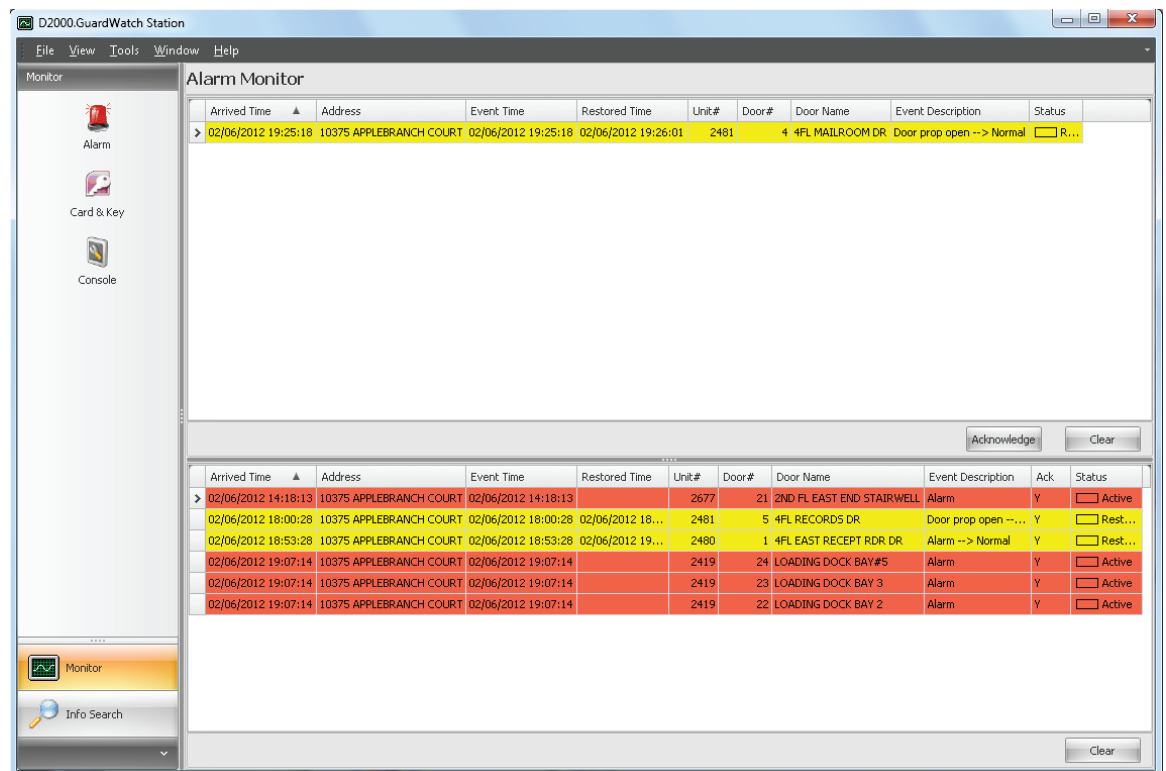


## Datawatch GuardWatch®

GuardWatch® is a part of the Total Lobby Solution developed by Datawatch Systems. GuardWatch® was developed jointly with Admiral Security Services – a sister company of Datawatch Systems and gives your security staff greater control over access and safety in your building.

- Guards can monitor real-time alarms throughout the building. They can optionally monitor alarms from other properties you manage. If a guard doesn't acknowledge an alarm, GuardWatch® will automatically forward the alarm to Datawatch Central Station for resolution.
- Guards can also monitor real-time access card activity throughout your building. For example if someone runs cards on the 11th floor at 2am, GuardWatch® alerts security so they can investigate.
- GuardWatch® lets guards secure and unsecure doors with a simple click of a mouse. It's easy to let in a tenant who forgot their card, or keep doors open for events that run past normal business hours.
- In an emergency, a click of a mouse can lock down all perimeter doors.
- Search for and view card holders, registered visitors, access events and alarms. Track down the owner when a lost card is found.
- Cloud-base GuardWatch® fully integrates with your Datawatch access control system. It is also configurable, so you can specify what your security staff can control.



Contact us today to receive uncompromising quality of service

Datawatch Systems, Inc.  
4401 East West Highway  
Suite 500  
Bethesda, Maryland 20814  
www.datawatchsystems.com  
301.654.3282

SALES & PRODUCT INFORMATION  
Sales@Datawatchsystems.com  
CUSTOMER CARE  
HelpDesk@Datwatchsystems.com